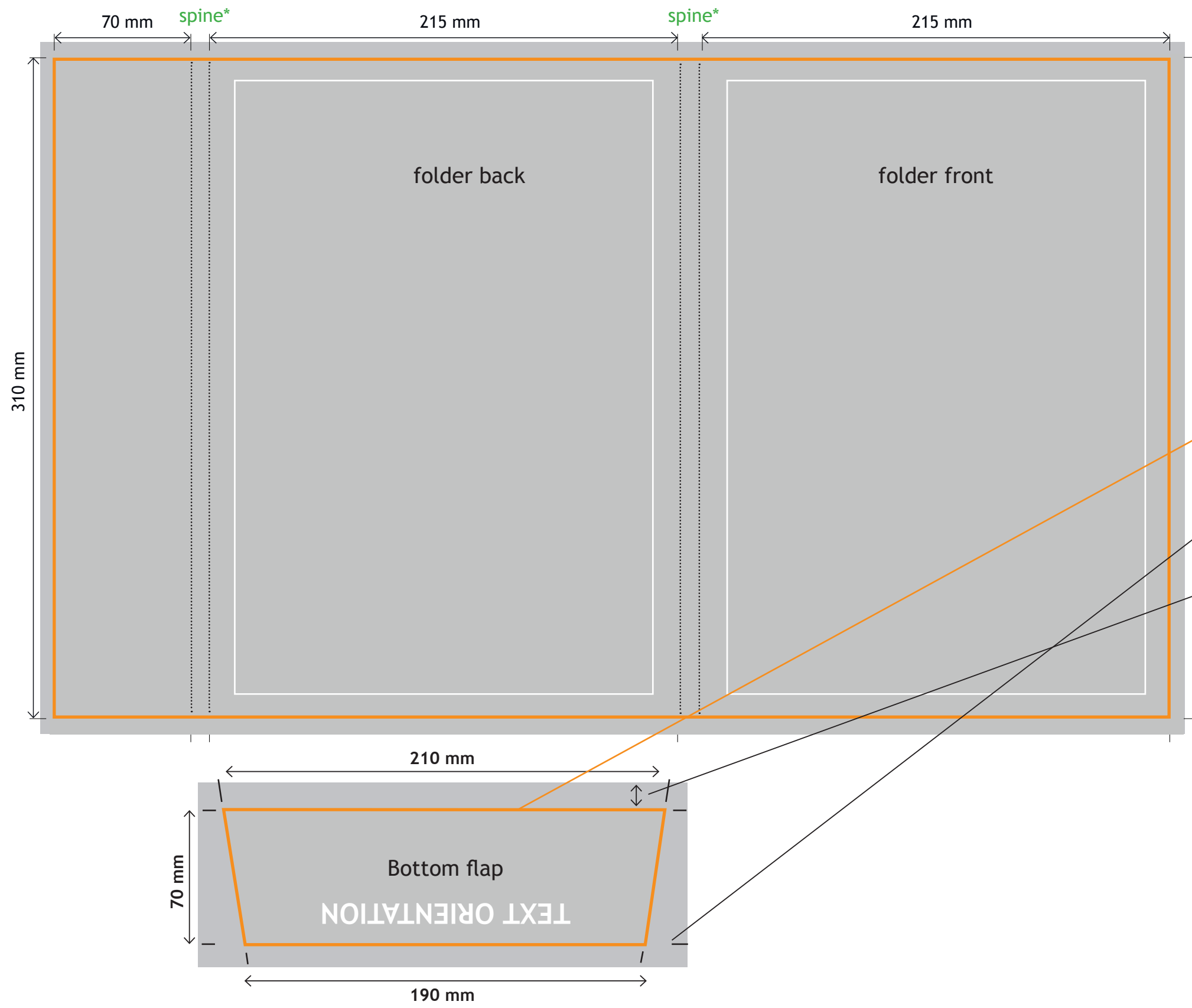


# TEMPLATE FOR FOLDERS WITH BOTTOM FLAP



← see the Template for document folders with side flap file for general instructions

## bottom flap

**Document size:** 210 x 70 mm

**flap size:** upper base 210 mm, height 70 mm, lower base 190 mm

Create the **cropping marks** manually with at least 3 mm offset from the exact size

Approx. **15 mm wide stripe** for gluing to the folder body

For **export**, set bleed 15 mm and no cropping marks

