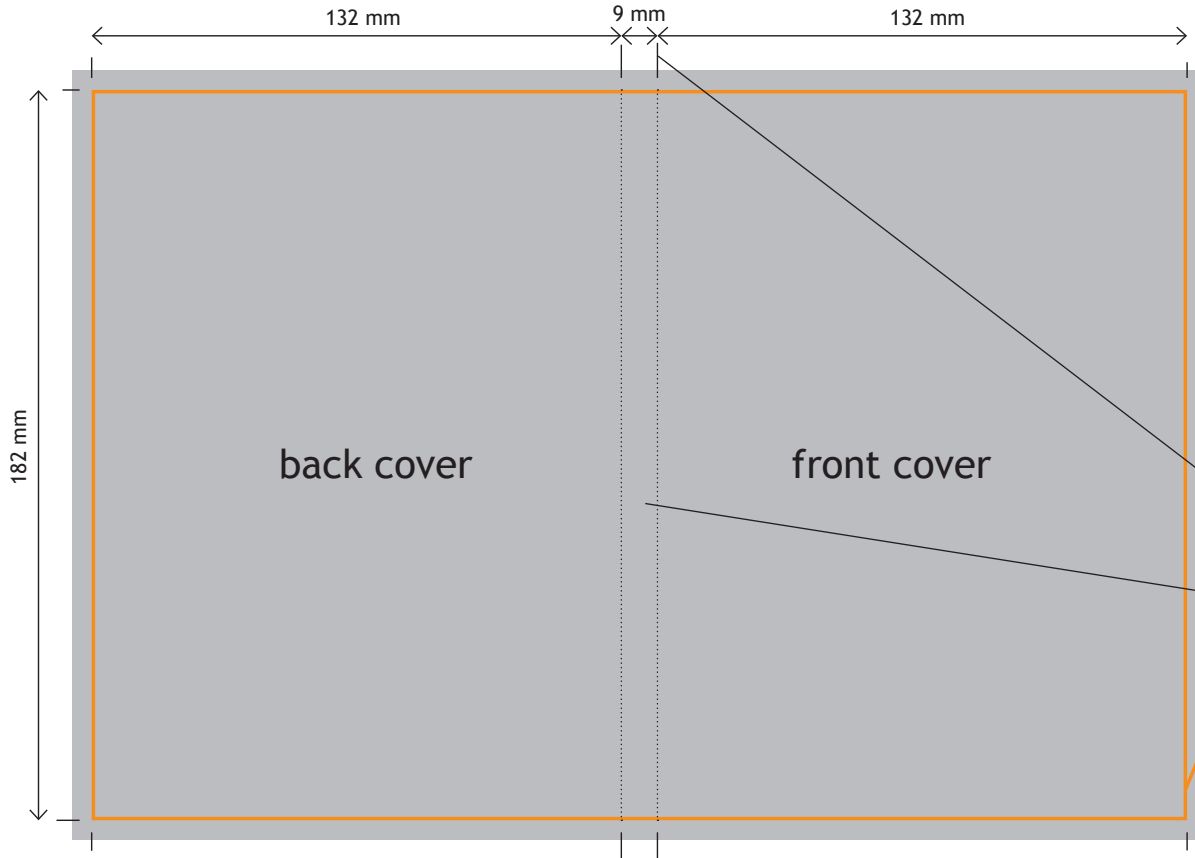


STANDARD DVD BOX



cropping marks are offset by 3mm from the exact size

bleed 5 mm will be cut off during final trimming. Its purpose is to prevent occurrence of white unprinted edges in case of minor imprecisions

spine marks must be offset by 3mm from the edge of the exact size

spine width is 9mm

exact size of the cover is 273 mm x 182 mm, i.e. $(132 + 9 + 132)$ mm x (182) mm